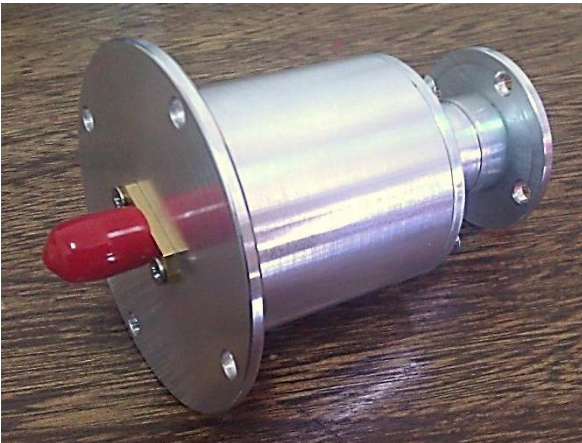


DATA SHEET

Single Channel Rotary Joint



Part number: zsnrjd511

Radio frequency channel characteristics

Interface type/ material / surface finish	Aluminium alloy 7020/ nickel chromated surface
Interface orientation	straight Through I style
Frequency range	DC To 5GHz
Average power capability	25W
Insertion loss over rotation(Max)	<1 dB (considering Fig.2) for frequencies less than 4.5GHz
VSWR (Max)	<2 (considering Fig.2) for frequencies less than 4.5GHz
Phase variation over rotation max.	0.5 degree

General mechanical data

Rotation speed, max.	500 rpm
Life min.	10e7 rotations
Starting torque, max.	0.2 Nm @ room temperature
Torque over rotation, max.	0.2 Nm @ room temperature
Axial load on interface, max.	±10 N
Radial load on interface, max.	±10 N
Case material	Aluminium 7020 alloy
Case surface finish	Nickel chrome plated
Weight, approx.	0.1 kg

General environmental conditions

Operation

Ambient temperature range	-40 to +70°C
Relative humidity, max.	85% (condensation not permitted)

Storage

Ambient temperature range	-40 to +70°C
Relative humidity, max.	85% (condensation not permitted)

Outline and dimensions (all dimensions in millimeters)

Dimensions tolerance : ±0.05 mm

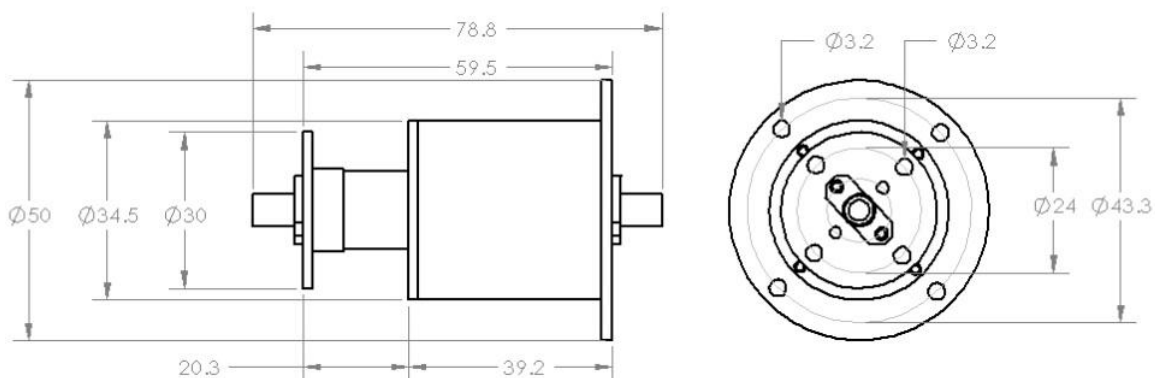


Fig.1

Pin-Pout (dB): (Return Loss)+(Insertion Loss)

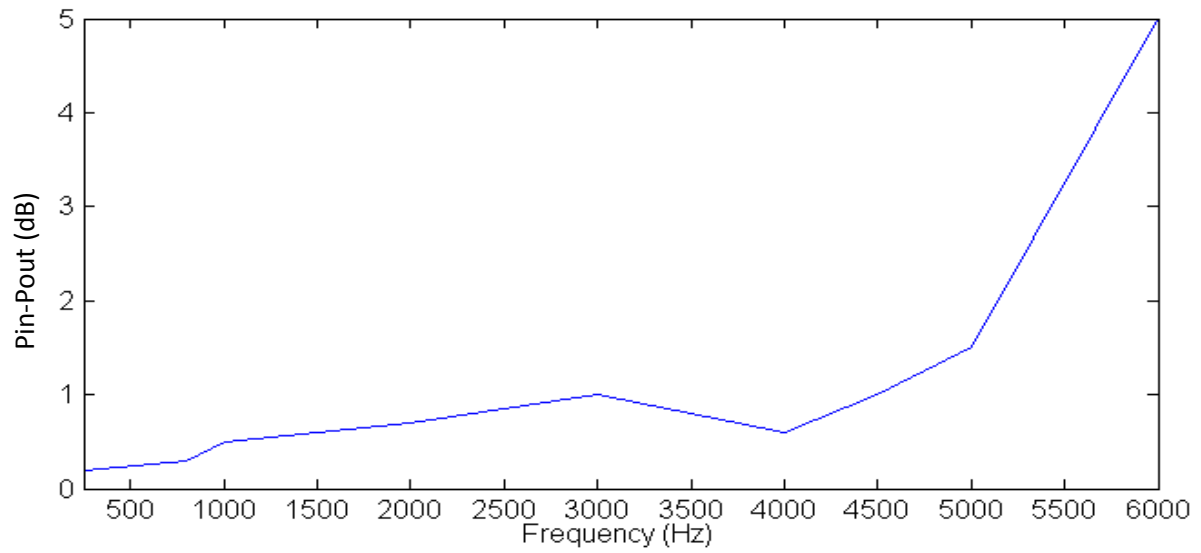


Fig.2